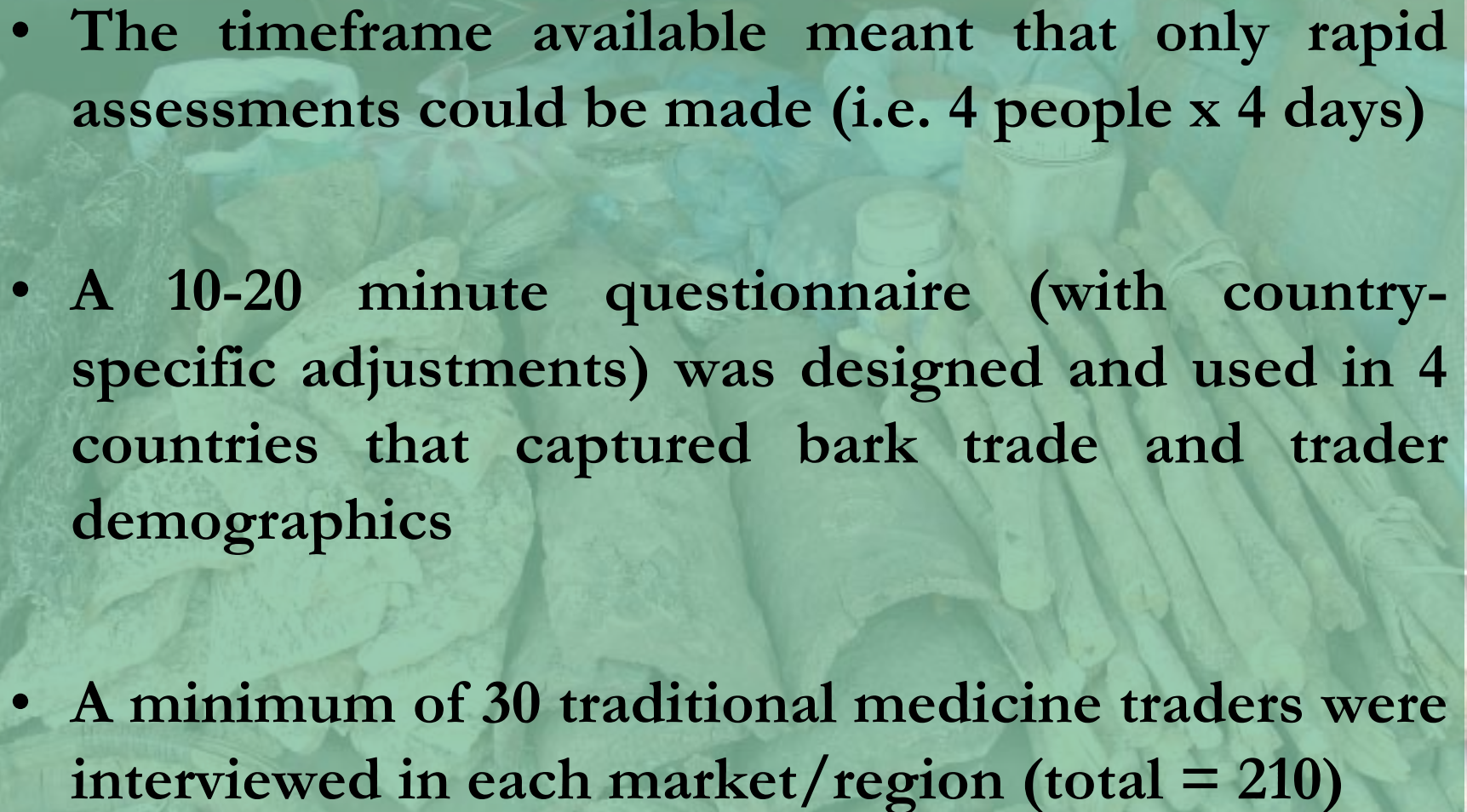




**Market networks for medicinal
bark in southern Africa**

Vivienne L. Williams

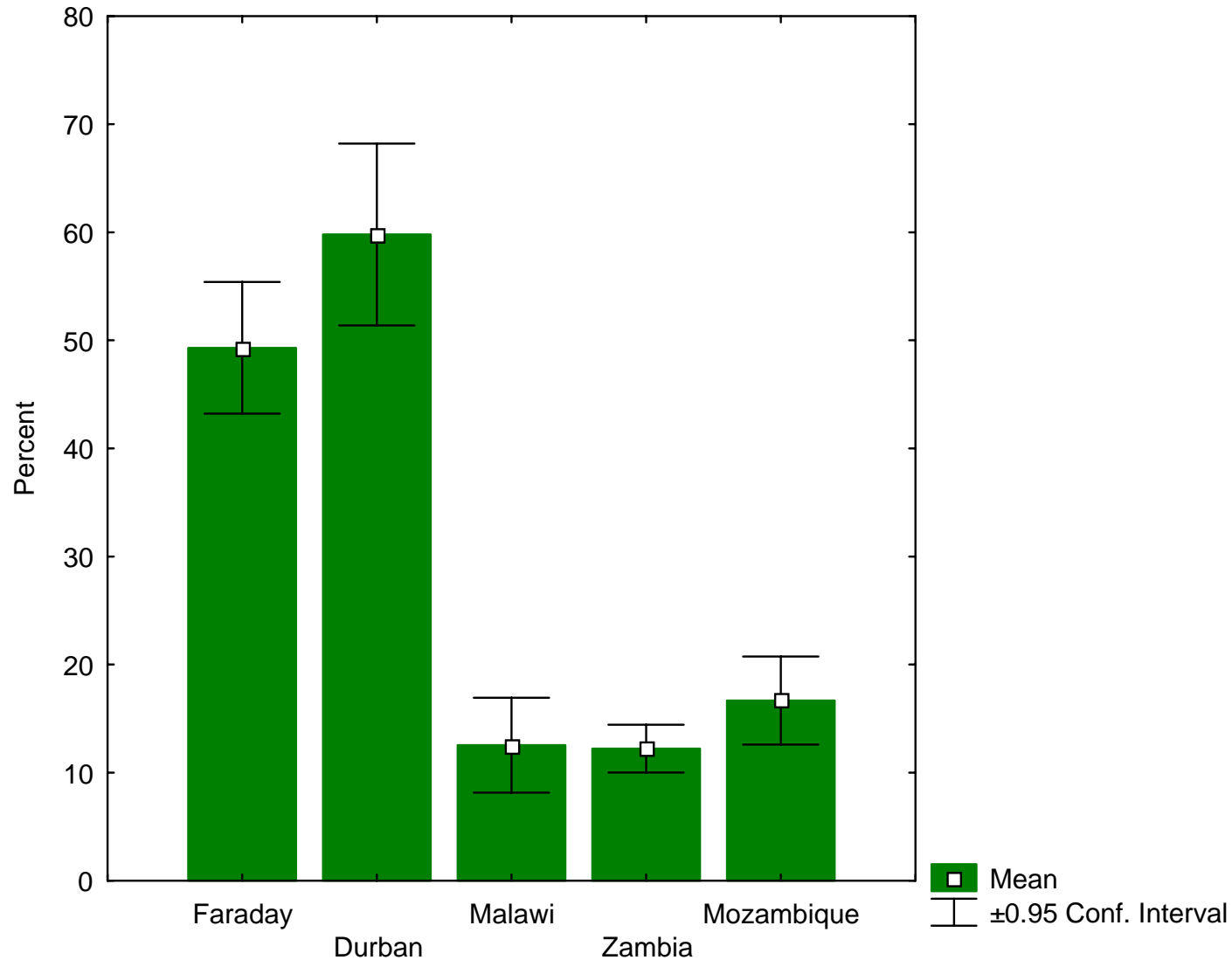
- 
- The timeframe available meant that only rapid assessments could be made (i.e. 4 people x 4 days)
 - A 10-20 minute questionnaire (with country-specific adjustments) was designed and used in 4 countries that captured bark trade and trader demographics
 - A minimum of 30 traditional medicine traders were interviewed in each market/region (total = 210)



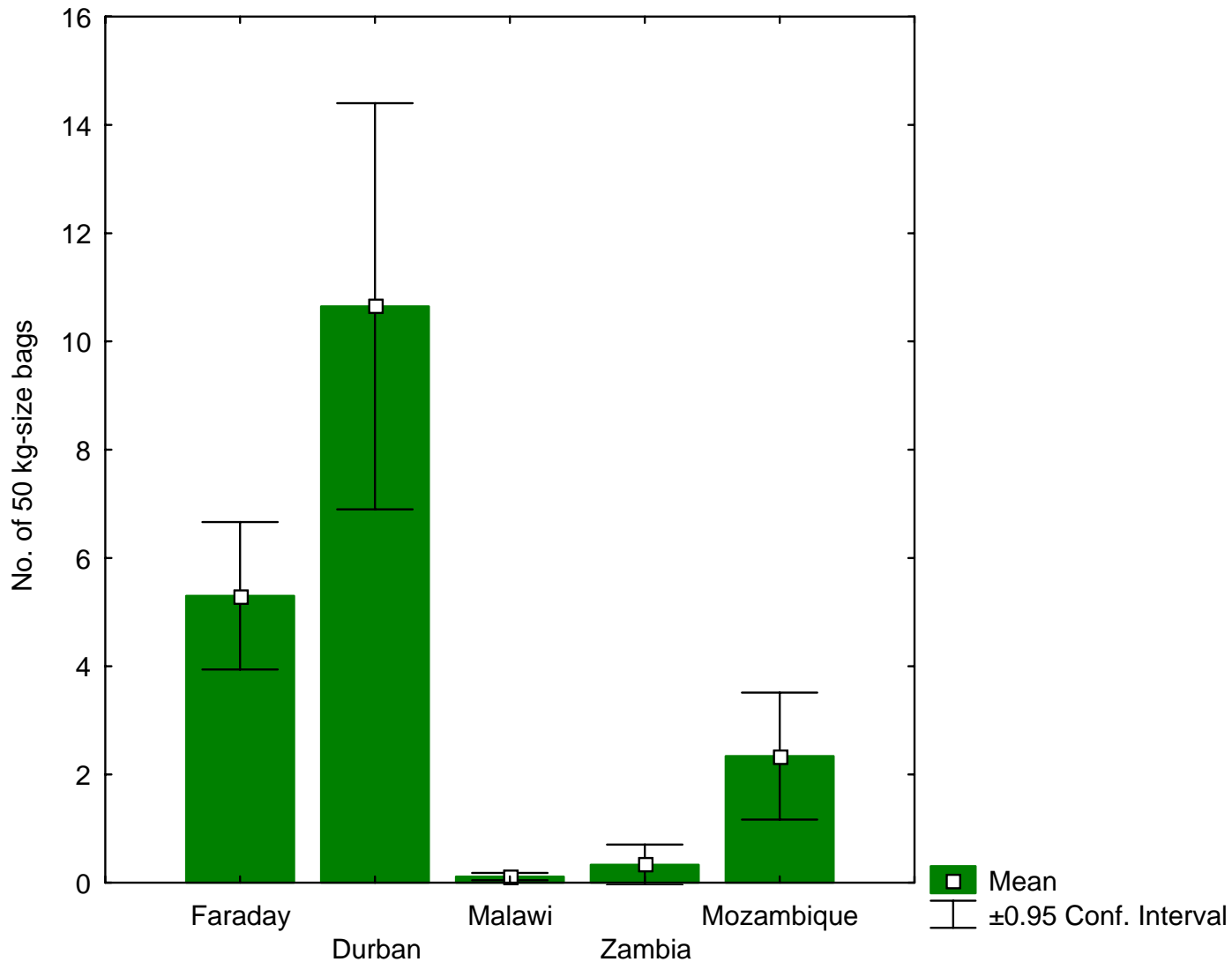


Preliminary results.....

% of material sold per trader which is tree stem bark



No. of 50 kg-size bags of bark sold per trader per month



Noteworthy species in trade

	Cited as scarce	Cited as popular	Imported
Durban			
Faraday			<ul style="list-style-type: none"> * Warburgia salutaris (isiBhaha) * Ilex mitis (isiDumo)
Mozambique		<ul style="list-style-type: none"> * Cassipourea malosana (memesa) * Warburgia salutaris (chibaa) 	Cassipourea malosana
Malawi	<ul style="list-style-type: none"> * Erythrophleum sauveolens (mwavi) * Pterocarpus angolensis (mlombwa) 	<ul style="list-style-type: none"> * Erythrophleum sauveolens * Pterocarpus angolensis * Khaya anthotheca 	Erythrophleum sauveolens
Zambia			Erythrophleum sauveolens (umwafi)

Mean % of volume harvested by the trader versus bought from other traders

	Mean % harvested by traders	Mean % bought from collectors and/or other markets
Durban	21%	79%
Faraday	32%	68%
Mozambique		
Malawi	80%	20%
Zambia	81%	25%



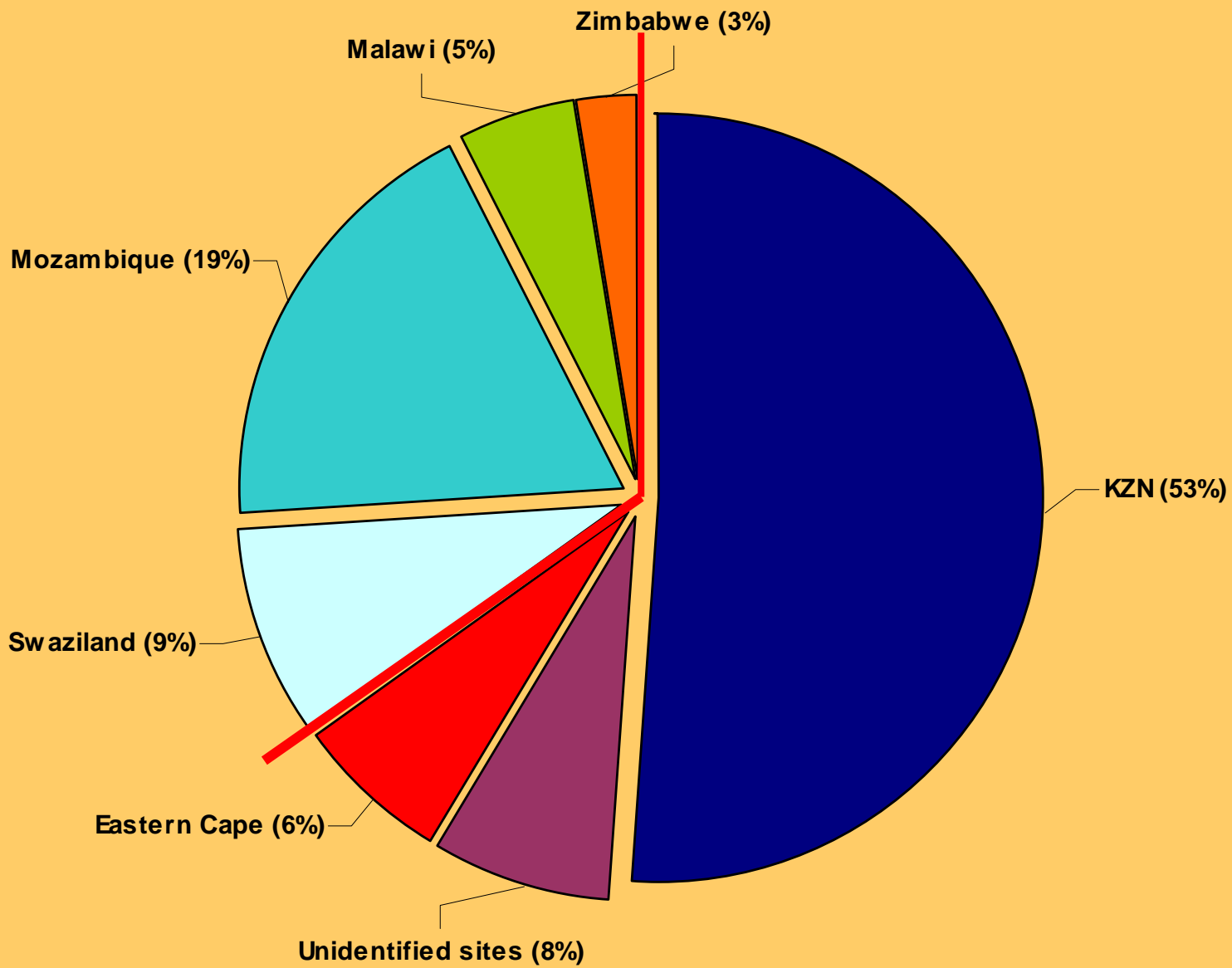
South Africa

Johannesburg

- 79% buy from suppliers
 - Primarily known traders or,
 - other markets e.g. Durban & Hlabisa (KZN)
- Sources within South Africa
 - 83% KZN
 - Esp. Nongoma, Phongola, Ulundi, uMhlabuyalingana

Durban

- 68% buy from suppliers
 - Primarily known traders or,
 - other markets e.g. Johannesburg; Ezimbuzini, Nongoma & Jozini (KZN); Bizane (EC); Maputo (Xipamanine)
- Sources within South Africa
 - 53% KZN
 - Esp. Ndwedwe, Nongoma, uMhlabuyalingana
- Sources 3.9 ± 2.7 hours drive



South Africa

Johannesburg

- 30% of traders indicated that some of the bark was harvested outside South Africa – primarily Mozambique
- 53% reported sales to foreign customers – mainly patients and herbalists from Swaziland

Durban

- 67% of traders indicated some of the bark was harvested outside SA – primarily Mozambique, Swaziland and Malawi
- 43% sold to foreign customers – mainly from Mozambique



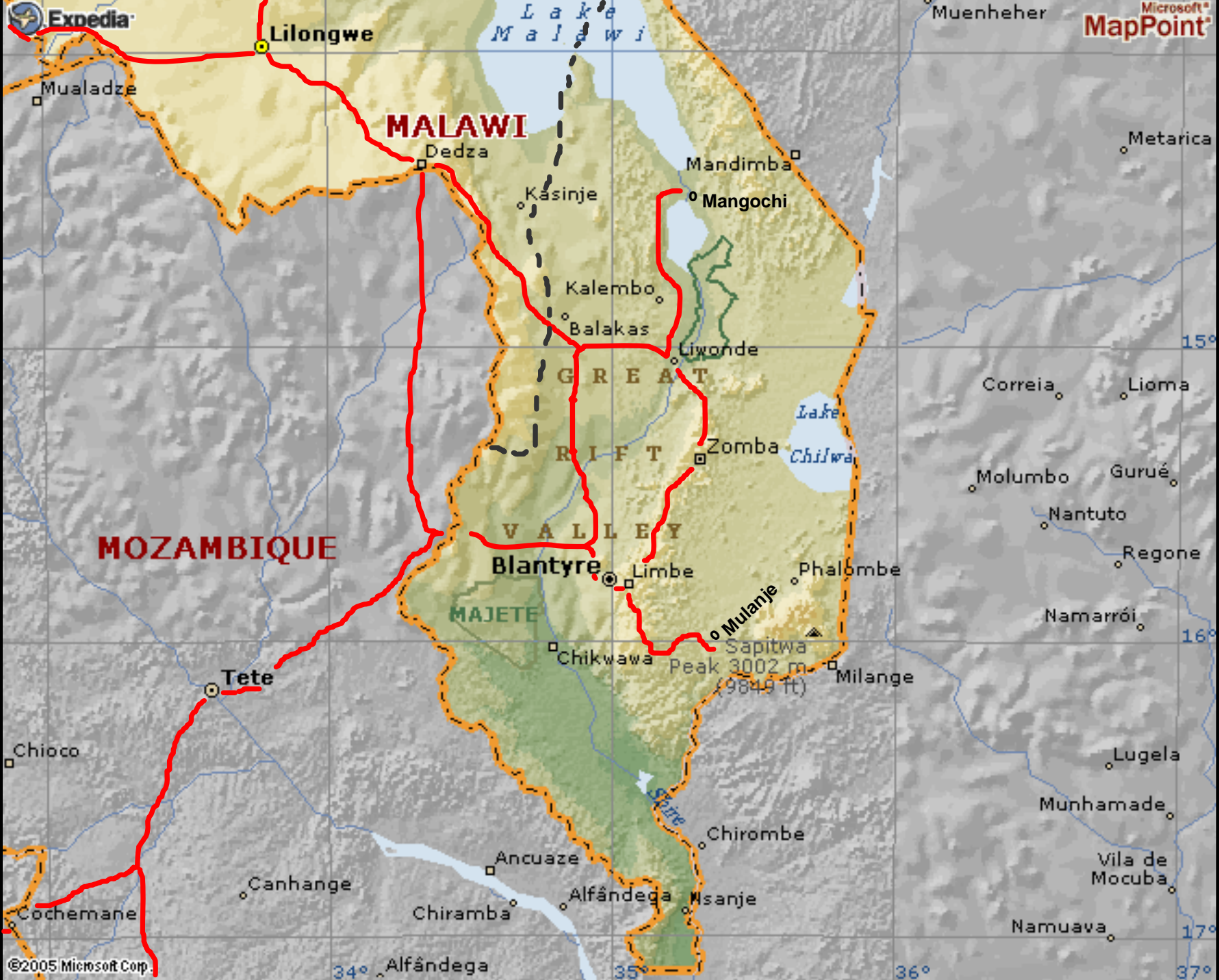
B2703

...M&S
...N PAY
...STATION ROAD



Mozambique - Xipamanine

- 19% of traders indicated that some of the bark was harvested outside Mozambique – from South Africa
- 15% reported sales to foreign customers, usually from South Africa
- Sources within Mozambique
 - 73% Maputo Province
 - 13% Gaza; 10% Inhambane Province; 3% Nampula
- Distance from harvest sites: ± 197 km



Malawi – Southern Region

- 80% of traders harvest what they sell
- 20% buy from suppliers – almost always sellers they know
- 40% of traders indicated that some of the bark was harvested outside Malawi – all from Mozambique
- 56% reported sales to foreign customers – mainly herbalists from or going to South Africa

Malawi – Southern Region

- Sources within Malawi
 - 95% Southern Region, esp. the districts of Blantyre, Zomba, Machinga (Liwonde Forest Reserve), Chiradzulo and Mangochi
- 19% of traders are originally from the district they trade in
- 68% of traders return to their home districts to harvest plants
- Distance from harvest sites: 7.8 ± 3.2 hrs drive or 7.5 ± 6.8 hrs walking

CALENDAR

SEPTEMBER 2005						
sun	mon	tue	wed	thu	fri	sat
	1	2	3	4	5	
6	7	8	9	10	11	12
13	14	15	16	17	18	19
20	21	22	23	24	25	26
27	28	29	30			

DECEMBER 2005						
sun	mon	tue	wed	thu	fri	sat
		1	2	3		
4	5	6	7	8	9	10
11	12	13	14	15	16	17
18	19	20	21	22	23	24
25	26	27	28	29	30	31

Pay taxes promptly

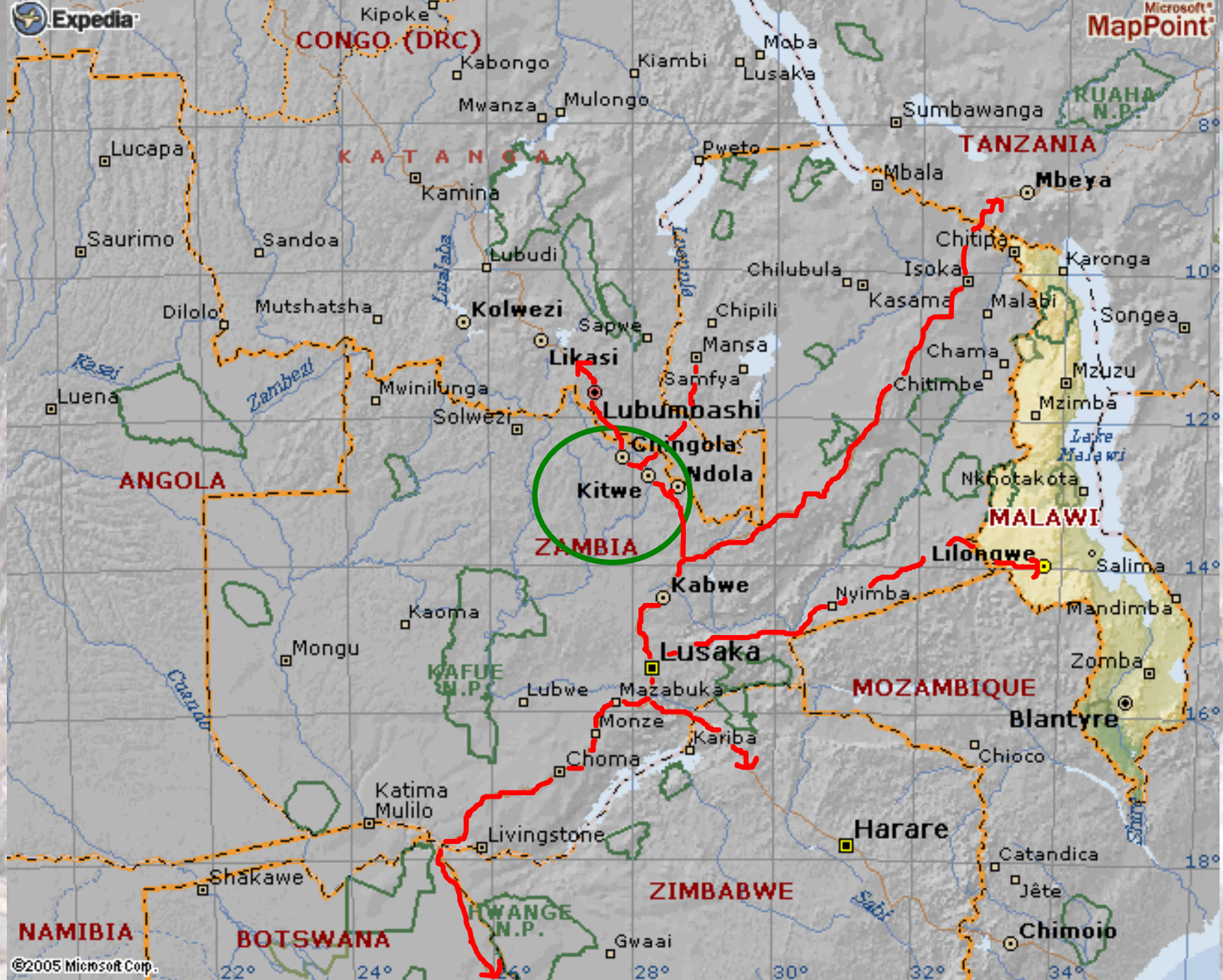


Malawi – Southern Region

- Between 22 June and 24 November 2004, 133 people declared the material they were exporting
- 38% was traditional medicine
 - Mainly roots
 - 95% destined for SA; 8% Botswana; 2% Zimbabwe
 - Mean mass 37 ± 26 kg
 - 24% of traders from Mangochi and 20% from Blantyre
 - 72% of the products were harvested from the Southern Region – mainly Mangochi and Mulanje







Zambia - Copperbelt

- **Sources within Zambia**
 - 54% from the Copperbelt Province
 - 13% from the Southern Province
 - 9% from Luapula Province
 - (9% from DRC)
- **5% of traders are originally from the Copperbelt, 95% are migrants mostly from northern and Eastern Zambia**
- **Distance from harvest sites: 4.4 ± 3.0 hrs drive or 2.6 ± 2.0 hrs walking**

Zambia - Copperbelt

- 30% of traders indicated that some of the bark was harvested outside Zambia – primarily the DRC (through the Mufulira route)
- 41% reported sales to foreign customers – mainly customers from the DRC.
- There were also links to herbalists/traders from Senegal and Uganda

CTOR

Kalaya

TEYO



Dr. KASONGO
CHIBALABALA
MORNING NORTHERN PRO. KARUTA



THRAX

D.R. MAKUMBA THRAX
AFRICAN DOCTAR

TULAPOSHAAMALWEAYENET (KAWAMUWEE)
UMIUTIWANGIITA COLA ETLA
UKUSAMFYAIFIRANDA. (HOUSE NO: 850)



Summary

Zambia: Copperbelt

- **Copperbelt: herbalists are harvesting locally, even though they are migrants to the province. International trade is mainly with DRC .**

Malawi:

- Traders in the towns were primarily from other districts BUT they were going back to their 'home' districts to harvest. Therefore there's a lot of movement within Southern Malawi. There is also strong international links to RSA – mixture of ex-pats and commercial gatherers. The main trade route seems to be via Tete and Harare

Mozambique:

- Southern Mozambique and Maputo seem to have strong links with RSA – mainly through the Durban market. Northern Mozambique has stronger ties to Malawi and there is a substantial cross-border trade between them.

South Africa:

- **Durban is the ‘godfather’ of all southern African markets - it is a very large wholesale market (including supplying Johannesburg and other urban markets) and the hub for the regional trade.**