



# **Progress on research for sustainable medicinal bark harvesting**

**Jenny Wong**

**Wild Resources Limited, UK**

# Why bark ?

- **Most common plant part used for traditional medicine in South Africa**
- **Case study of sustainable forest management for traditional medicine**
- **Junction of health, livelihoods and natural resource management**

# Why is research needed?

- **Status quo failing to protect resource**
- **Commercialisation brings new pressures**
- **Resource under threat**
- **Need to develop alternative management options**
- **Management needs to be evidence-based**

# FAO NWFP Programme

Project GCP/RAF/354/EC 'Sustainable forest management in African ACP countries'

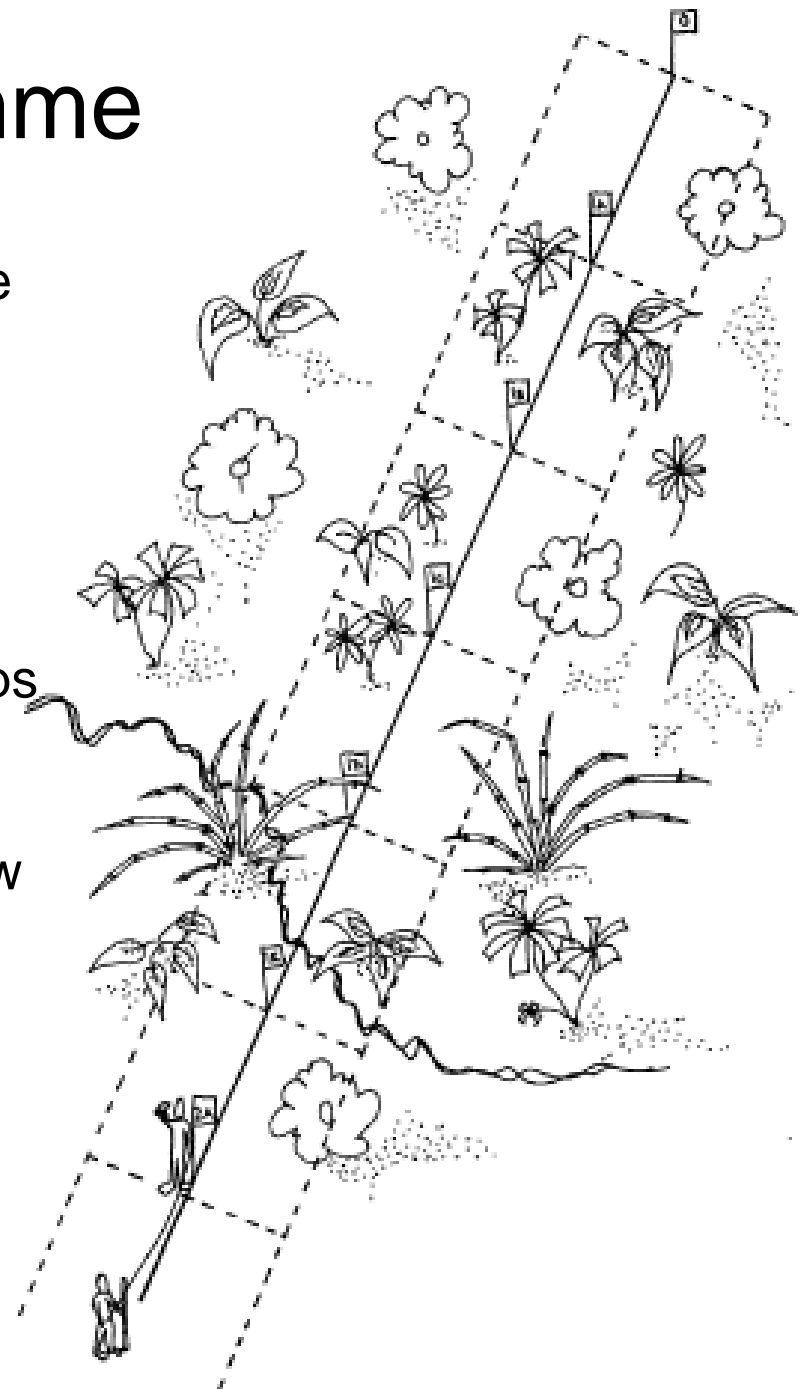
## OUTPUTS:

2001/2 – Lusaka & Yaounde workshops

2003 – Six case studies undertaken

2005 – Draft Guidelines for peer review

2006 – Publication of Guidelines





# COMMERCIAL PRODUCTS FROM THE WILD INNOVATION FUND PROJECT 31114

‘Bark for medicinal use’ study focussed on 4 species and examined:

- i) sustainable bark-harvesting practices in natural forest,
- ii) cultivation of alternative resources,
- iii) development of institutional structures, and
- iii) small business development.

‘Commercialising medicinal plants: A Southern African Guide’  
Launch 1 Dec 2005, Stellenbosch, South Africa

# FRP Bark project

**R8305 'Developing biometric sampling systems and optimal harvesting methods for medicinal tree bark in southern Africa'**

## **OUTPUTS:**

**2005 – This workshop**

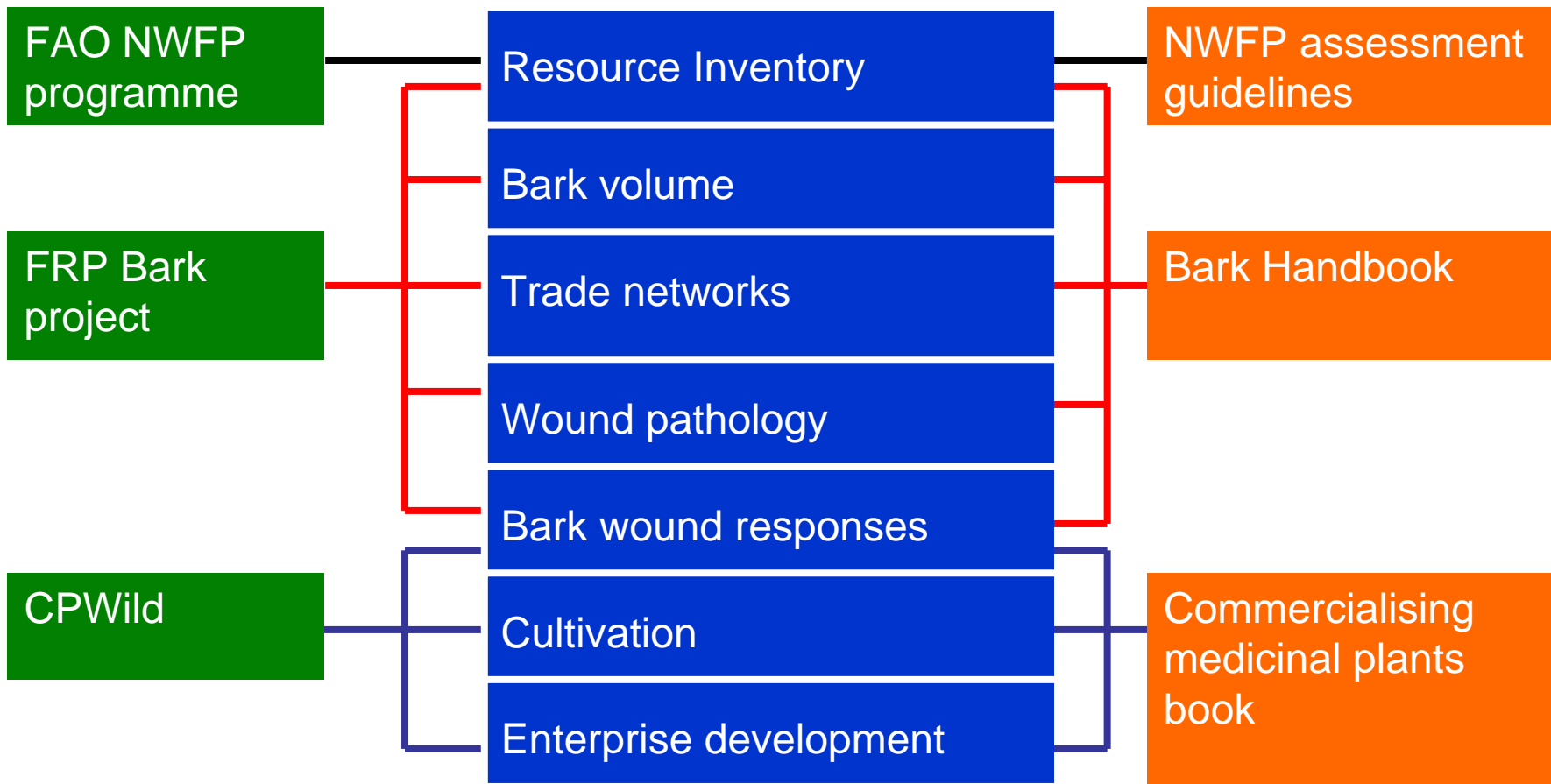
**2006 – Handbook for preparation of bark management plans**

**– Training materials to support Handbook**

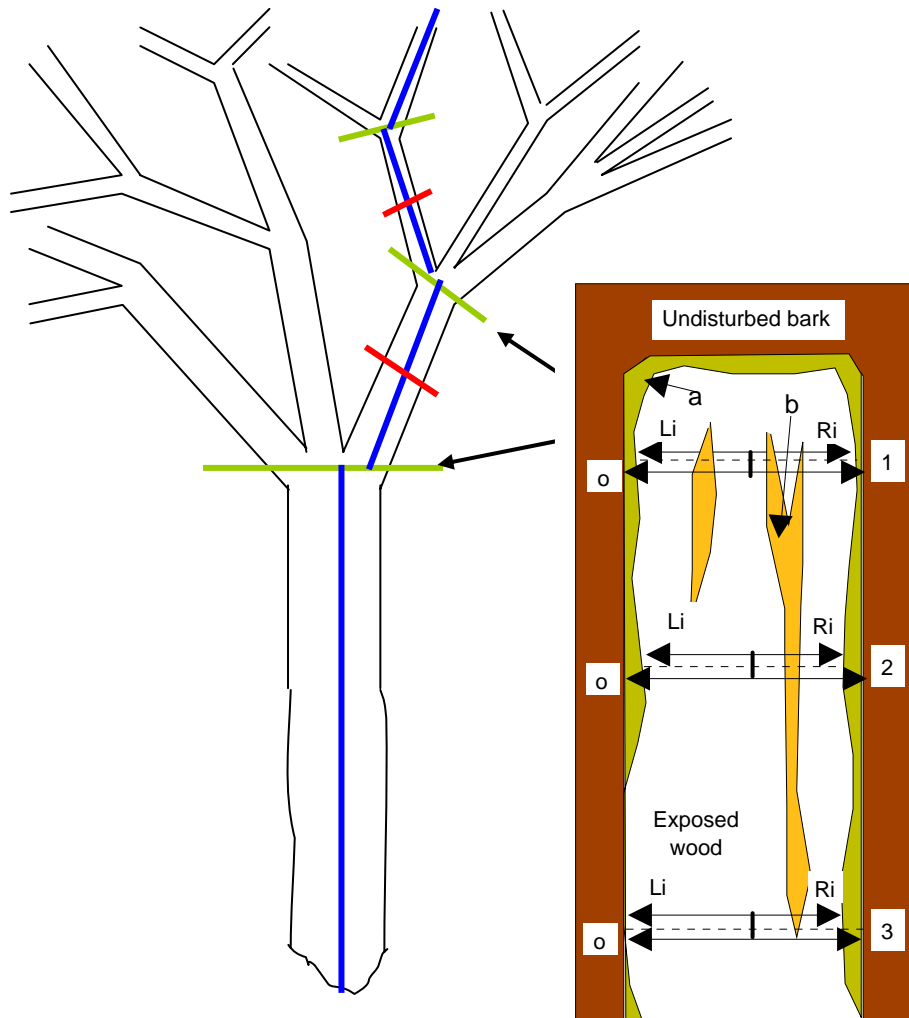
**– Reports and papers**



# Generating synergy between projects

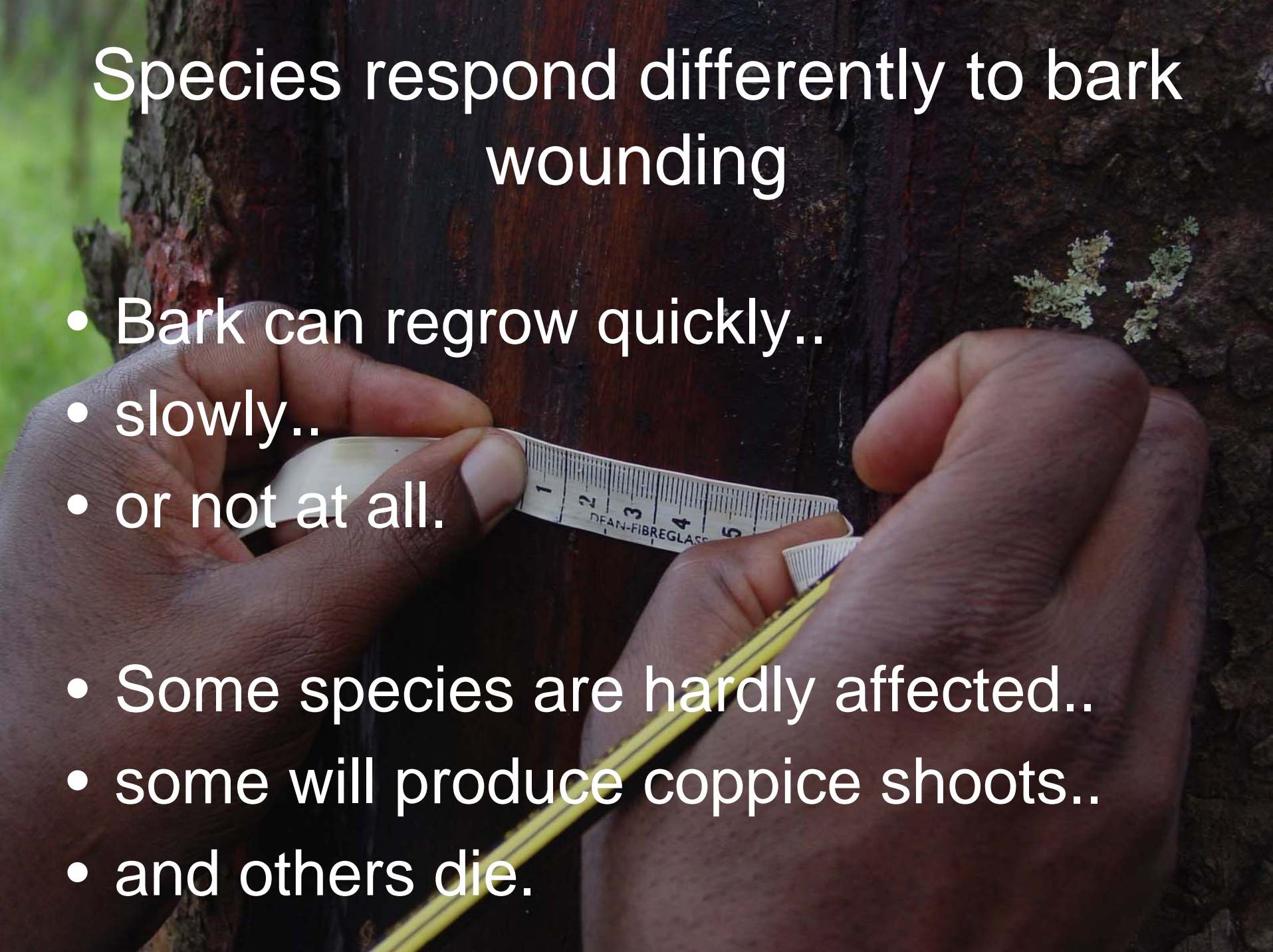


# What have we found out ?



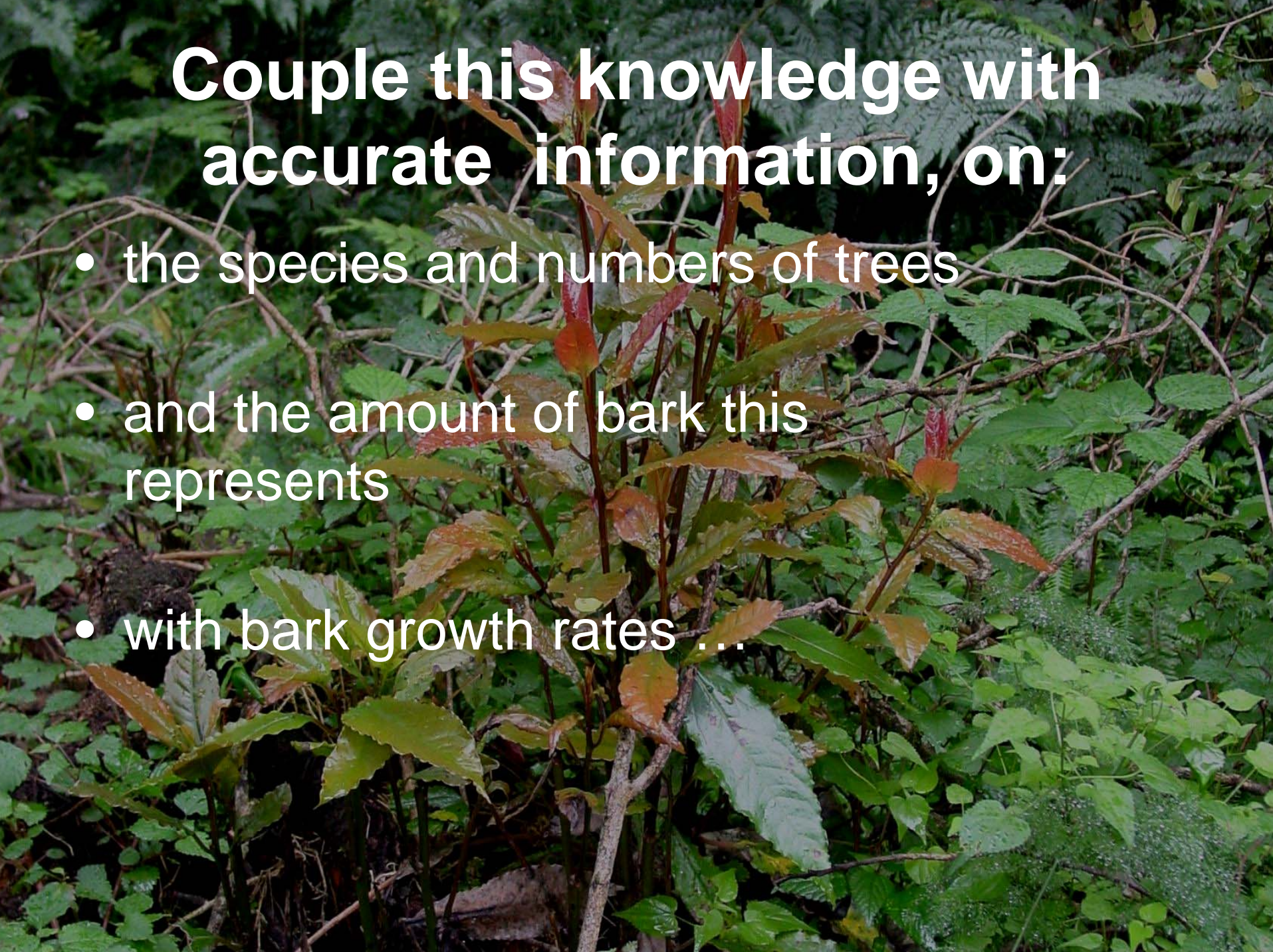
# Species respond differently to bark wounding

- Bark can regrow quickly..
- slowly..
- or not at all.
  
- Some species are hardly affected..
- some will produce coppice shoots..
- and others die.



# Couple this knowledge with accurate information, on:

- the species and numbers of trees
- and the amount of bark this represents
- with bark growth rates ...



**And we can begin to advise on optimal harvesting strategies for specific areas and circumstances.**

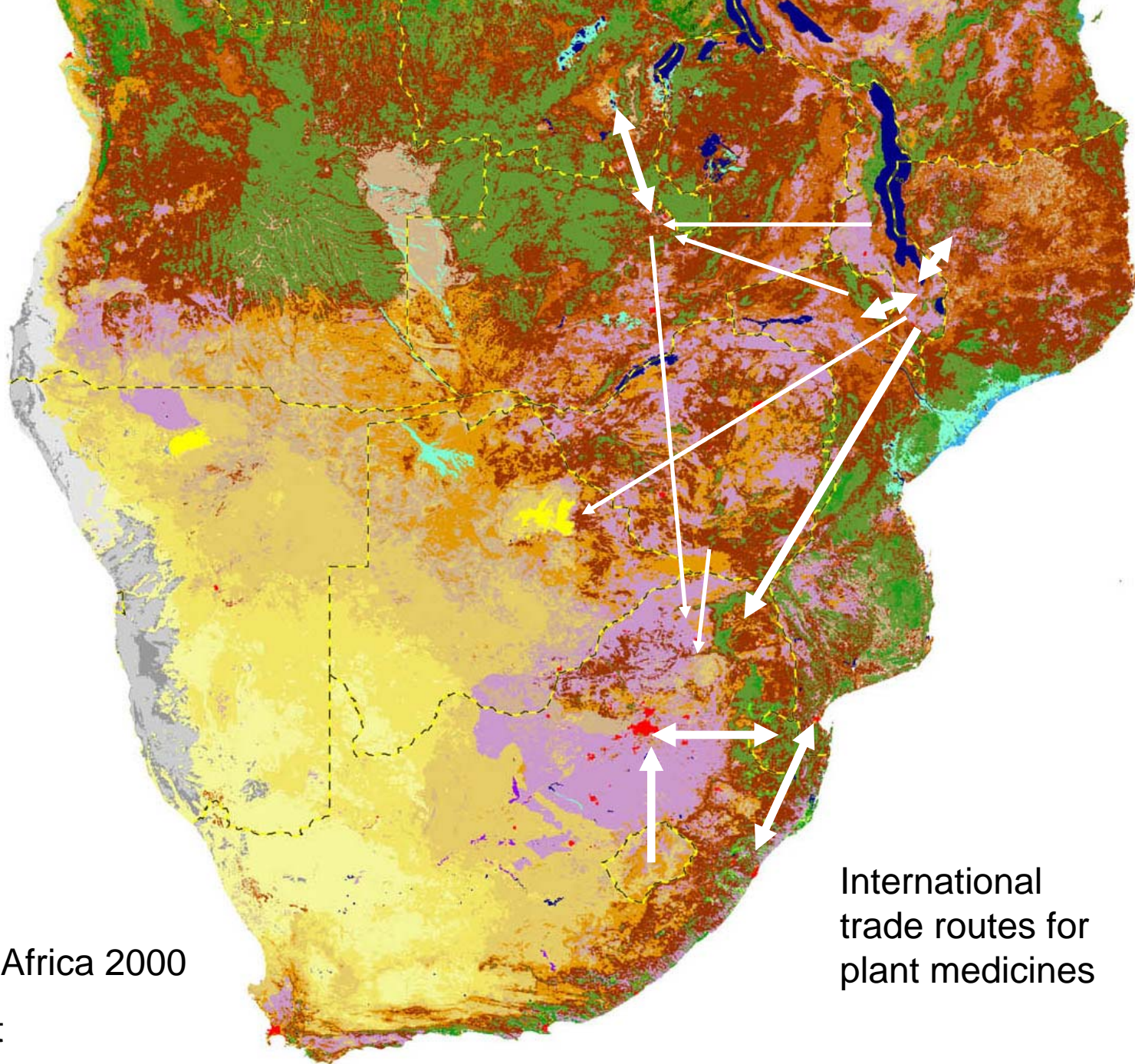


# BUT who is most likely to implement sustainable bark harvesting?

- People close to the forest?
- People with livelihoods dependant on bark?
- Traders?
- Herbalists?



Land cover of Africa 2000  
Green = forest



International  
trade routes for  
plant medicines

# And what is required to make sustainable bark harvesting a reality?

- Sharing of responsibility with all stakeholders
- Regional co-operation
- Capacity building
- Institutional recognition...



**This is where the FRP  
team hands over to *you!***